



# GAT MONTHLY MEMBERSHIP PROGRESS REPORT

Results as of: 5/31/2024

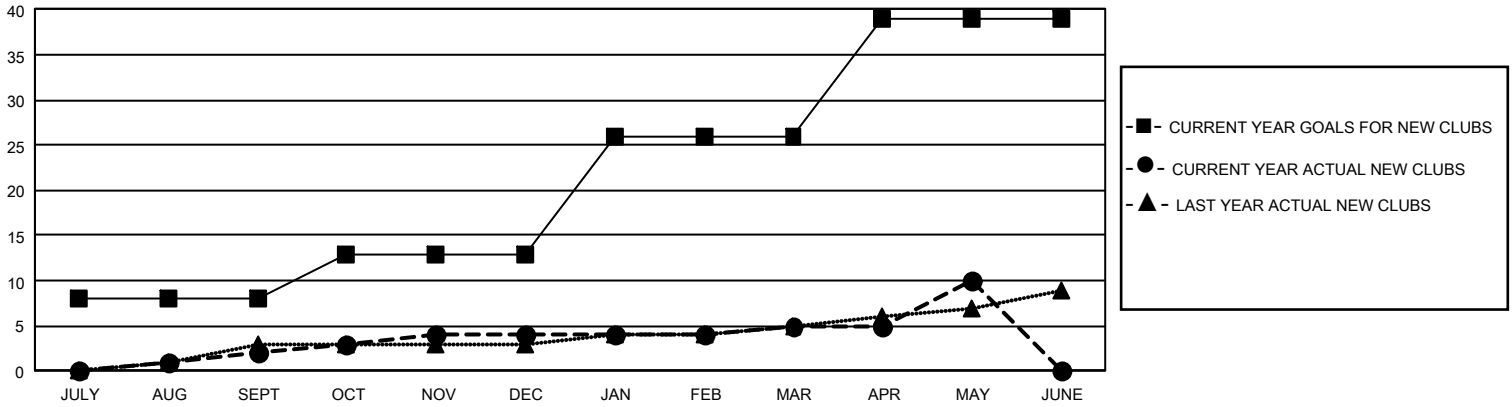
## GMT Constitutional Area 1, Group B

REPORT DOES NOT INCLUDE CLUBS IN UNDISTRICTED AREAS.

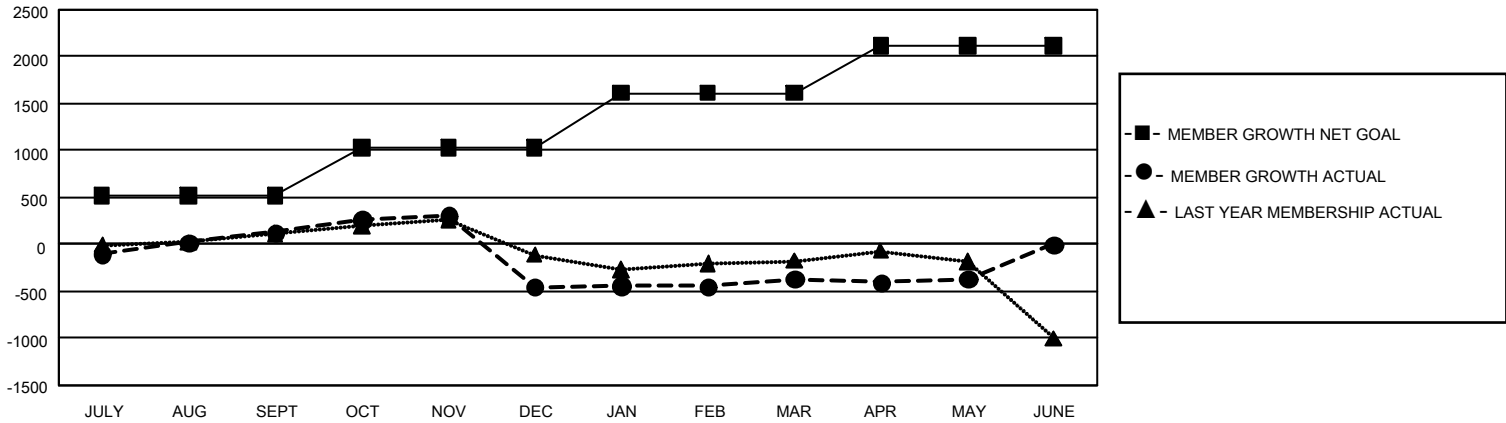
Clubs			
RESULTS FOR 2023-2024			
QUARTER	NEW CLUB GOAL	NEW CLUBS	DROPPED CLUBS
JULY/AUG/SEPT	24	2	5
OCT/NOV/DEC	15	2	26
JAN/FEB/MAR	39	1	8
APR/MAY/JUNE	39	5	1

Members			
RESULTS FOR 2023-2024			
QUARTER	MEMBER GROWTH NET GOAL	MEMBER GROWTH ACTUAL	DROPPED MEMBERS ACTUAL (including transfers)
JULY/AUG/SEPT	518	1,246	971
OCT/NOV/DEC	511	849	1,347
JAN/FEB/MAR	582	986	761
APR/MAY/JUNE	501	619	571

GOALS AND ACTUAL NEW CLUBS CUMULATIVE



GOALS AND ACTUAL MEMBERS CUMULATIVE



<b>DROPPED CLUBS: 40</b>	630 CLUBS OF 1,023 ADDED 1 OR MORE NEW MEMBERS	<b>GENDER DISTRIBUTION</b>	
		MALE 15,563 (57.61%) FEMALE 11,427 (42.30%) NON BINARY 3 (0.01%) PREFER NOT TO ANSWER 21 (0.08%)	
<b>DROPPED MEMBERS</b>		<a href="#">CLICK HERE FOR CUMULATIVE MEMBERSHIP DATA</a>	
DECEASED 381 CLUB CANCELLED 318 OTHER 2,948 <b>TOTAL 3,647</b>	TOTAL FAMILY UNIT MEMBERS 5,547 FAMILY MEMBERS PAYING HALF DUES 2,929		